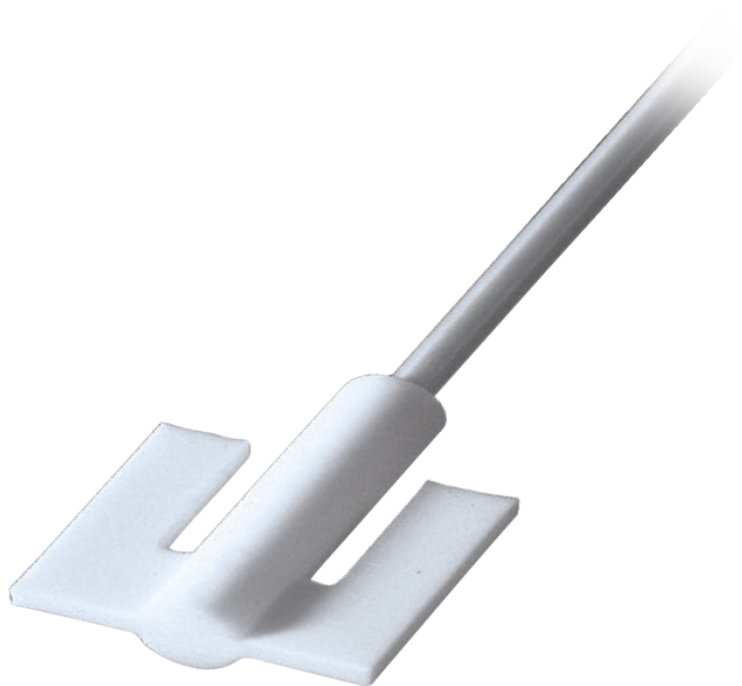


AR 19 Anchor-Type Impeller

P/N: 509-19000-10



Particularly in applications with very viscous media, it is important to have a stirring tool in use that enables the mixing process up to the edges of the vessel. This explains the shape of the anchor-type impeller and the width of the stirring blade of 60 mm.

The AR 19 anchor-type impeller is ideal for vessels with the following characteristics:

- ideal vessel diameter: 67 mm
- ideal ground clearance: 2 mm
- ideal filling level: 67 mm
- ideal volume: 200 ml

The anchor-type impeller consists of a PTFE blade and a PTFE-coated stainless steel shaft. The stainless-steel core ensures the stability of the stirrer shaft and the secure attachment in the overhead stirrer. The diameter in the clamping area is 6.5 mm; the stirrer shaft with the thick-walled PTFE coating has a diameter of 8 mm.

Due to its anti-adhesive property (non-stick coating), the anchor-type impeller is easy to clean and can be used up to a maximum application temperature of 250°C.

AR 19 Anchor-Type Impeller - Teknik veri

Blade ölçüsü	60 x 40 x 5 mm
Materyal	PTFE
Uzunluk	350 mm
Şaft çapı	8 mm
Mak. Rotasyon hızı	800 rpm