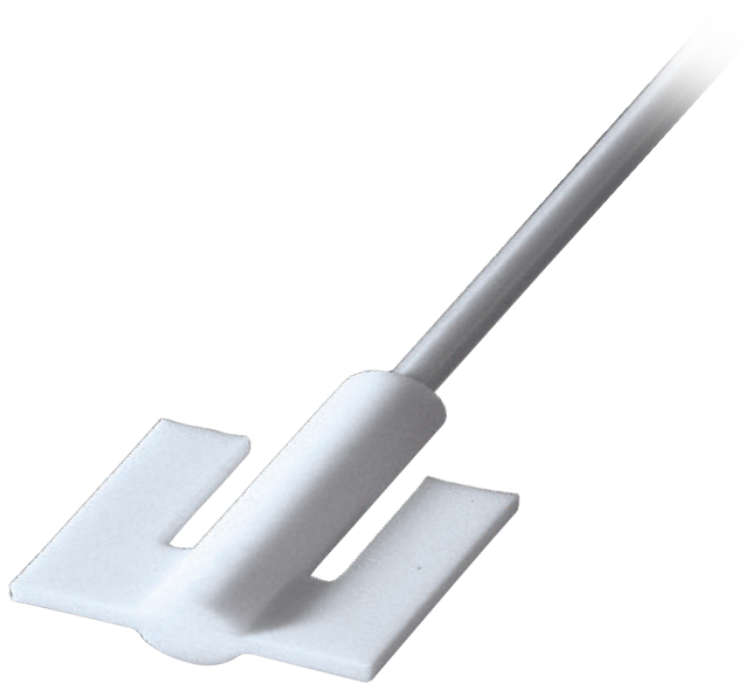


AR 19 Anchor-Type Impeller

P/N: 509-19000-10



Anchor-Type Impeller

- These impellers are recommended for applications which require a low speed
- For mixing tasks with medium or high viscosity

AR 19 Anchor-Type Impeller - Technical Data

Blade size	60 x 40 x 5 mm
Material	PTFE
Length	350 mm
Shaft diameter	8 mm
Max. rotation speed	800 rpm